

NEUGART NEUGART NEUGART NEUGART NEUGART NEUGART NEUGART NEUGART NEUGART NEUGART

力。高精度。合作伙伴

power. precision. partnership.



高精度变速器
precision gearboxes



高强度、高精度。
良好的合作伙伴关系。

尊敬的女士们，先生们，
超强动力，高精度以及良好的合作伙伴关系是本公司80多年来始终贯彻执行的经营理念。

今天呈现在您面前的全新编辑的产品目录中，将用90多页的篇幅向您介绍我们多年的宝贵经验和公司专业实力。

当前的供货目录中包括许多成熟的，具有创新和技术性的驱动-/变速器解决办法。本公司可以向您提供六种不同的行星齿轮传动减速器系列，分别具备经济、高精度和高效等不同应用特点。作为您卓越的技术合作伙伴我们还将研发并生产高精度齿轮啮合部件以及完全遵照客户需求的特殊变速器。

特别说明：WPLN代表了变速器行业技术标准。新型高精度锥齿轮变速器的运行噪音明显降低、其具有坚固的结构设计、高效以及完美的实际应用。

如果您对产品目录2009或我们的产品/服务有疑问，欢迎随时查询，我们时刻为您服务。

*Impress with power and precision.
Inspire with partnership.*

*Dear Sir or Madame,
Power, precision and partnership – these values characterise our business philosophy and our work, and have for over 80 years.*

In our newly designed and newly structured catalogue, introduced to you today, we present our experience and performance.

The current product range includes numerous innovative and technologically mature drive and gear solutions. We now offer six different planetary gear series for the sectors Economy and Precision. As a competent technology partner, we develop and manufacture highly precise gear parts as well as specialised gearboxes – adapted precisely to your specific needs.

Please contact us if you have any questions about the 2009 catalogue, our products or services – we're happy to help.

Bernd Neugart
管理伙伴
managing partner



Thomas Herr
管理伙伴
managing partner



2-5 企业 / *The company*



PLN 6-19

低回程间隙行星减速机
low backlash planetary gearbox
最精密级
precision at highest level

WPLN 18-29

低回程间隙角度输出减速机
low backlash angle gear box
高精度锥齿轮变速器
the precision angular gear box

PLFN 30-37

低回程间隙法兰输出减速机
low backlash flange gearbox
高刚度、高性能和结构紧凑短小
high stiffness with high performance data and short construction

PLE 38-53

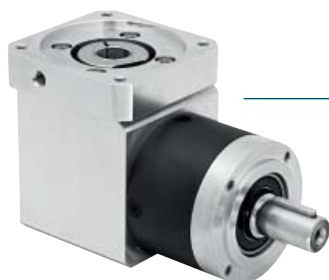
低回程间隙行星减速机
low backlash planetary gearbox
相对PLN-系列，合理的经济型产品
the economy alternative to the PLN-line

WPLE 54-67

低回程间隙角度输出减速机
low backlash angle gearbox
PLE系列的转角式减速机
the angular gearbox of PLE-line

PLFE 68-75

低回程间隙经济型法兰输出减速机
low backlash economy flange gearbox
结构紧凑，性能卓越
compact efficiency



76 定货代码 *ordering code*

77 选择 / *options*

78-79 减速机关键尺寸/选型 / *gearhead sizing/selection*

80 最大可传递输出转矩
Max. transferable output torque

81 热容技术符合S1模式
thermal specifications for S1 operation

82-83 特种减速机 / *custom made gearboxes*

84-85 用户定制齿轮 / *custom made geared parts*

86-88 联系 / *contact*

PLN

WPLN

PLFN

PLE

WPLE

PLFE

注重细节， 打造完美。 公司产品。

高效、功能强劲，
高精度行星齿轮传动变速器。

无论在机床、铸塑机中，还是在包装机、印刷机和纺织器械中，或在自动控制技术、喷涂机械手设备中：我们的高精度行星齿轮传动变速器对于各种不同的应用领域将是最好的选择。此外本公司还提供非标准类的器械。本公司将持续研发高品质的驱动设备。

概览：

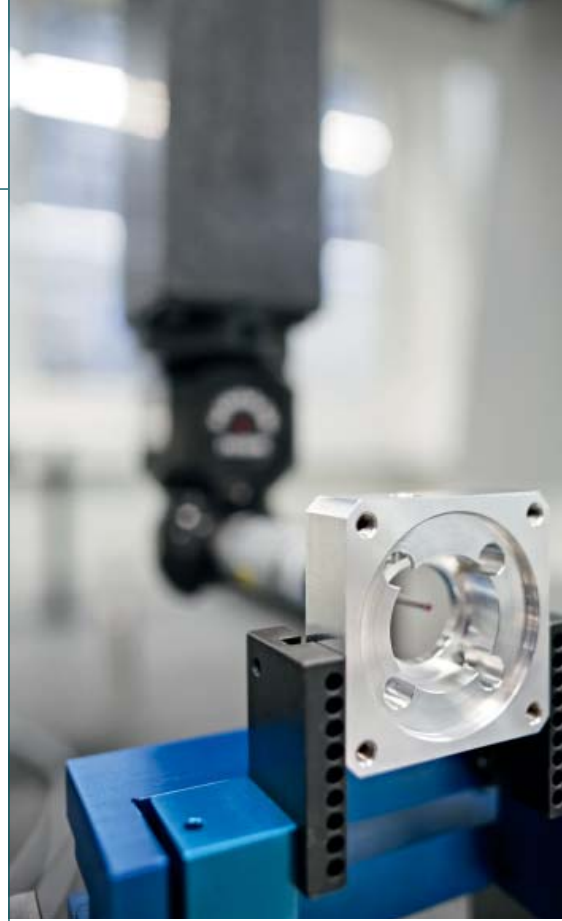
- > 产品种类丰富 - 标准变速器，特殊变速器和啮合件。
- > 六种标准产品系列 - 多种选择。
- > 特殊变速器 - 根据客户要求量身打造。
- > 啮合件 - 提供不同的加工方式。
- > 高质量、灵活性 - 理想供货时间。

创新和独特：
特殊变速器。

坚固的结构设计及高性能、特殊的结构需求。食品级的认证或独特的设计:本公司可以满足客户在机械领域中的各种复杂要求。高素质的技术工程师设计变速器系统并解决变速器各种问题。服务、成本和质量恰到好处。
创新优势：本公司将长期的专业经验以及不断的研发成果运用到客户解决办法中。

值得信赖、高精度：
我们的结合点。

本公司提供驱动技术领域里的各种部件。根据客户要求。



Perfection - in every detail. Our products.

Powerful and efficient:
Our precision planetary gearboxes.

Whether in machine tools or die-casting machines, in packaging, printing and textile machines, in automation technology or in robotic painting systems: Our precision planetary gearboxes are ideally suited for numerous applications. We offer much more than just standard. The high-quality drive elements are continuously being developed further.

At a glance:

- > *A broad product range – standard gearboxes, specialised gearboxes and gear parts.*
- > *Six strong standard model series – many options.*
- > *Specialised gearboxes – individually customised to your needs.*
- > *Gear parts – a wide range of options are available.*
- > *High quality and flexibility – with optimal delivery times.*

Innovative and individual:
Our specialised gearboxes.

Compact form and high performance, special construction requirements. Food grade certification or individual design: We fulfil even your most complex requirements – in all sectors of machine building. The qualified specialists of our engineering department design gearbox solutions and systems. According to your performance, quality and quality needs. Your benefit from innovation: We utilise our experience and at the same time take advantage of new developments, integrating them into our customer solutions.

Reliable and highly precise:
Our gear parts.

We offer you numerous additional components relating to drive technology. Perfect for your needs and demands.

服务优。 *quality*

质量好。 我们的产品质量。

概览：

> 目标明确。
针对领导层、所有工作人员以及工作质量
本公司制定了具体的质量目标。

> 承诺。应重点强调的是我们是一支高
效、高素质的团队。除了权威的培训与指
导之外,我们的员工会相应的对自己的任何
行为负责。

> 持续。
我们坚持完善每个工作流程,从小做起构
成了我们进行重大革新和完善的基石

> 可证明的。
我们设计制定、执行了质量-环保管理系统
并对其进行详细记录,该管理系统涵盖了
本公司所有产品。在质量-环保管理系统文
件中包含了所有一般重要规则。

顾客满意是本公司的终极目标,产品质量
和服务是我们的首要任务。

本公司的质量-环保理念保证并保持了我们
在国际市场上不断地取得巨大成功。

Power - at a high level. Our quality.

Your satisfaction is our measuring stick - that's why the quality of our products and services are always our top priority. With our quality and environmental policy we secure and expand our economic success on all international markets.

At a glance:

> Goal oriented. We declare concrete quality goals - under the responsibility of the management and involvement of all employees as well as consideration of the quality of work.

> Committed. We put emphasis on a highly motivated and qualified team. In addition to training and instruction, our employees receive authority as well as responsibility for their activities.

*> Consistent.
We are in a process of continuous improvement - and we connect the large steps of innovation with the small steps of continual optimisation*

*> Verifiable.
We maintain and document a comprehensive quality and environment management system that comprises all phases of the rendering goods and services. All regulations relevant to the standards are described in the documentation of the QM/EM system.*



尽情享用。 我们的服务。

我们不仅创造产品，还有根据不同功能，以经济、长远的方式解决各种不同的问题。对此，本公司期待与您的合作以及为您提供更为舒适的服务。

> **直接来讲：**

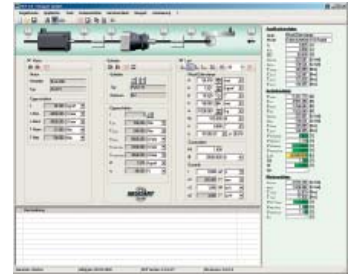
本公司提供由咨询到研发设计的服务。您的问题就是我们的任务：我们向您提供咨询服务并与您一起讨论研发新的、适当的解决问题的办法。我们员工中的5%在设计研发部门工作。

> **处于领先地位：**

专业技能和技术。
创新的、先进的生产工艺值得信赖，高素质的员工队伍值得信赖。本公司免费提供NCP传动系设计软件。在网页下载区域为您提供CAD制图，尺寸图或使用说明。

> **对所有情况：**

高效。
生产面积总计扩建11.000 m²，这样足以保证我们标准产品的理想供货时间。另外您可从我们高品质的产品中获得公平的市场价格以及长期的成本优势。



Simply greater benefit. Our service.

We don't just make products, we create solutions - functional, economical and forward-looking. Therefore, intensive collaboration and the right service for you are important to us.

> **From one source:**

From consulting to development. Your task, our job: We provide consulting and develop new and customised solutions together with you. Roughly 5% of our employees work in development and design.

> **At a new level:**

Know-how and technology. Trust in innovative and proven manufacturing methods and in the knowledge of our employees. NCP, the design software for the power train, is available to you at no cost. And our website offers you a comprehensive download area – with CAD drawings, dimension sheets or operating instructions.

> **On all accounts:**

Focus on efficiency. With our expanded production area of 11,000 m² we can guarantee optimal delivery times for our standard products. You also profit from fairly calculated market prices, from permanent cost optimisation - with consistent high quality.



公司网络全球化。 竭诚为您服务。

本公司在产品质量、技术支持和服务上的高标准要求得到了国际认可：在全世界所有重要的工业国家中我们拥有超过20家代理和分支机构。

本公司只在德国进行产品制造。在美国和中国的组装厂可以满足不同地区的需求并保证供货时间和货物调度的灵活性。



*Globally active for
you.
Our network.*

Our high standard in product quality, support and service appreciated internationally: With over 20 representatives and branches, we are represented in all important industrial nations.

We manufacture our products exclusively in Germany. In the USA and China, our assembly factory serve regional markets, guaranteeing a high level of flexibility for adaptations as well as the shortest delivery times.





体积小且出力大

For tough situations

PLF减速机能满足一些非常特殊的需求 高刚度、高性能和结构紧凑短小是该系列产品的最主要特点。

Strong and compact: the PLFN gearboxes fulfill special demands. This gearbox model series is characterised by a highest level of stiffness paired with high performance, low backlash and compactness.



- > 最低的回程间隙(<1')
 - > 最大的输出扭矩
 - > 最高的抗扭刚性
 - > PCS-2标准配置
 - > 高效率 (98%)
 - > 齿轮经过打磨及精确珩磨
 - > 12 级减速 $i=4, \dots, 100$
 - > 低噪音 (< 65 dB(A))
 - > 高质量(ISO 9001)
 - > 安装位置随意
 - > 简易电机装配
 - > 终身润滑
 - > 更多的选配方式
 - > 输出法兰符合 EN ISO 9409 要求
 - > 旋转方向：同向
- > *lowest backlash (<1')*
 - > *highest output torques*
 - > *highest tilting stiffness*
 - > *PCS-2 is standard*
 - > *high efficiency (98%)*
 - > *grinded and honed geared parts*
 - > *12 ratios $i=4, \dots, 100$*
 - > *low noise (< 65 dB(A))*
 - > *high quality (ISO 9001)*
 - > *any mounting position*
 - > *easy motor mounting*
 - > *life time lubrication*
 - > *more options*
 - > *output flange similar to EN ISO 9409*
 - > *direction of rotation equidirectional*



1	技术资料 <i>technical data</i>	页 32 <i>page 32</i>
2	机械参数 <i>dimensions</i>	页 35 <i>page 35</i>
3	可选项 <i>options</i>	页 77 <i>page 77</i>
4	可能的电机装配方式 <i>possible motor mounting</i>	页 36 <i>page 36</i>
5	剖面图 <i>sectional drawing</i>	页 37 <i>page 37</i>
6	定货代码 <i>ordering code</i>	页 76 <i>page 76</i>
7	减速机关键尺寸/选型 <i>gearhead sizing/selection</i>	页 78 <i>page 79</i>
8	转换表格 <i>conversion table</i>	页 77 <i>page 77</i>
9	CAD 图, 参数表格 <i>CAD drawings, dimension sheets</i>	www.neugart.de www.neugart.de
10	基本数据与计算方法 <i>dimensioning/calculation</i>	NCP Software NCP Software

型号	size		PLFN 64	PLFN 90	PLFN 110	PLFN 140	i ⁽¹⁾	Z ⁽²⁾
额定输出扭矩 T _{2N} ⁽³⁾⁽⁵⁾	nominal output torque T _{2N} ⁽³⁾⁽⁵⁾	Nm	60	140	300	600	4	1
			65	140	260	750	5	
			40	80	150	450	8	
			27	60	125	305	10	
			77	150	300	1000	16	
			77	150	300	1000	20	
		2	65	140	260	900	25	
			77	150	300	800	32	
			65	140	260	800	40	
			65	130	260	620	50	
			40	80	150	450	64	
			27	60	125	305	100	

型号	size		PLFN 64	PLFN 90	PLFN 110	PLFN 140	i ⁽¹⁾	Z ⁽²⁾
最大输出扭矩 ⁽³⁾⁽⁵⁾⁽⁸⁾	max. output torque ⁽³⁾⁽⁵⁾⁽⁸⁾	Nm	96	224	480	960	4	1
			104	224	416	1200	5	
			64	128	240	720	8	
			43	96	200	488	10	
			123	240	480	1600	16	
			123	240	480	1600	20	
		2	104	224	416	1440	25	
			123	240	480	1280	32	
			104	224	416	1280	40	
			104	208	416	992	50	
			64	128	240	720	64	
			43	96	200	488	100	

系列	line		PLFN				Z ⁽²⁾
寿命	lifetime	h	20.000				
寿命以 T _{2N} × 0,88	lifetime at T _{2N} × 0,88		30.000				
急停扭矩 ⁽⁶⁾	emergency stop ⁽⁶⁾	Nm	2倍于 T _{2N} / 2 - times of T _{2N}				
满载效率 ⁽⁸⁾⁽⁷⁾	efficiency with full load ⁽⁷⁾	%	98				1
			95				2
最低工作温度 ⁽⁴⁾	min. operating temp. ⁽⁴⁾	°C	-25				
最高工作温度 ⁽⁴⁾	max. operating temp. ⁽⁴⁾		+90				
防护等级	degree of protection		IP 65				
润滑	lubrication		终生润滑 / life lubrication				
装配方式	mounting position		任意 / any				
电机法兰精度	motor flange precision		DIN 42955-R				

(1) 减速比(i=n_{an}/n_{ab})

(2) 级数

(3) 这些数据在下列条件下测得:输出转速n₂=100min⁻¹,电机在占空因数 K_A=1及S1连续工作制下,温度T=30°C

(4) 参考体表面的中部

(5) 取决于电机轴的直径

(6) 1000次以内

(7) 取决于减速比, n₂=100min⁻¹

(8) 输出轴最大允许30000转;见80页

(1) ratios(i=n_{an}/n_{ab})

(2) number of stages

(3) these values refer to a speed of the output shaft of n₂=100min⁻¹ on duty cycle K_A=1 and S1-mode for electrical machines and T=30°C

(4) referring to the middle of the body surface

(5) depends on the motor shaft diameter

(6) allowed 1000 times

(7) depends on ratio, n₂=100min⁻¹

(8) allowable for 30.000 revolutions at the output shaft; see page 80

型号	size		PLFN 64	PLFN 90	PLFN 110	PLFN 140	Z ⁽²⁾
回程间隙	backlash	arcmin	< 3	< 3	< 3	< 3	1
			< 5	< 5	< 5	< 5	2
	reduced backlash		<2	<1	< 1	< 1	
Fr _{max.} 于 20.000 h ⁽³⁾⁽⁴⁾	Fr _{max.} for 20.000 h ⁽³⁾⁽⁴⁾	N	2400	4400	5500	12000	
Fa _{max.} 于 20.000 h ⁽³⁾⁽⁴⁾	Fa _{max.} for 20.000 h ⁽³⁾⁽⁴⁾		4300	8200	9500	8500	
Fr _{max.} 于 30.000 h ⁽³⁾⁽⁴⁾	Fr _{max.} for 30.000 h ⁽³⁾⁽⁴⁾		2100	3900	4800	11000	
Fa _{max.} 于 30.000 h ⁽³⁾⁽⁴⁾	Fa _{max.} for 30.000 h ⁽³⁾⁽⁴⁾		3800	7200	8400	7500	
抗扭刚性	torsional stiffness	Nm / arcmin	16	35	90	200	1
			14	30	80	180	2
重量	weight	kg	1,5	3,0	6,5	13	1
			2,2	4,0	8	16	2
运转噪音 ⁽⁵⁾	running noise ⁽⁵⁾	dB(A)	< 65	< 65	< 68	< 70	
最大输入速度 ⁽⁶⁾	max. input speed ⁽⁶⁾	min ⁻¹	14000	10000	8500	6500	

型号	size		PLFN 64	PLFN 90	PLFN 110	PLFN 140	i ⁽¹⁾
最大输入速度在 50% T _{2N} 和 S1模式 ⁽⁶⁾⁽⁷⁾	max. middle input speed at 50% T _{2N} and S1 ⁽⁶⁾⁽⁷⁾	min ⁻¹	2450	2050	1550	1150	4
			2800	2450	1950	1200	5
			4100	4050	3300	2100	8
			4850	4950	4000	2700	10
			4300	4450	3850	2150	16
			4800	5100	4500	2600	20
			5400	5850	5500	3200	25
			5900	6000	6000	4250	32
			6000	6000	6000	4900	40
			6000	6000	6000	5500	50
			6000	6000	6000	5500	64
			6000	6000	6000	5500	100

型号	size		PLFN 64	PLFN 90	PLFN 110	PLFN 140	i ⁽¹⁾
最大输入速度在 100% T _{2N} 和 S1模式 ⁽⁶⁾⁽⁷⁾	max. middle input speed at 100% T _{2N} and S1 ⁽⁶⁾⁽⁷⁾	min ⁻¹	1950	1500	1050	800	4
			2150	1800	1400	850	5
			3500	3300	2650	1550	8
			4400	4250	3350	2150	10
			3350	3200	2550	1300	16
			3850	3700	3050	1550	20
			4500	4400	3900	2000	25
			4900	5050	4400	2750	32
			5600	5900	5500	3250	40
			6000	6000	6000	3850	50
			6000	6000	6000	5500	64
			6000	6000	6000	5500	100

(1) 减速比(i=n_{an}/n_{ab})

(2) 级数

(3) 这些数据在下列条件下测得:输出转速n=100min⁻¹,电机在占空因数 K_A=1及S1连续工作制下,温度T=30°C

(4) 参考法兰输出轴的表面

(5) 噪音检测标准;距离1m;在输入转速 n₁=3000min⁻¹; i=5

(6) 必须保证允许的工作温度;特殊的输入转速请联系确认

(7) 定义见81页

(1) ratios(i=n_{an}/n_{ab})

(2) number of stages

(3) these values refer to a speed of the output shaft of n₂=100min⁻¹ on duty cycle K_A=1 and S1-mode for electrical machines and T=30°C

(4) referring to the face of the flange output shaft

(5) sound pressure level; distance 1m; measured on idle running with an input speed of n₁=3000min⁻¹; i=5

(6) allowed operating temperature must be kept; other input speeds on inquiry

(7) definition see page 81

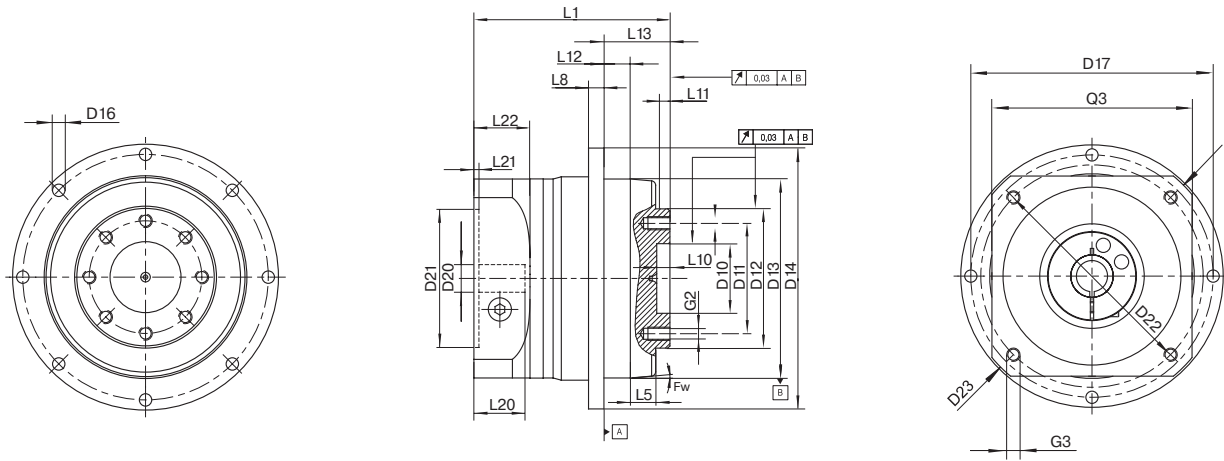
型号	size		PLFN 64	PLFN 90	PLFN 110	PLFN 140	i ⁽¹⁾
惯量 ⁽²⁾	inertia ⁽²⁾	kgcm ²	0,29	0,92	2,94	11,78	4
			0,26	0,77	2,51	9,70	5
			0,22	0,63	2,08	7,71	8
			0,21	0,59	2,00	7,40	10
			0,32	0,58	1,73	6,73	16
			0,30	0,56	1,65	6,51	20
			0,27	0,45	1,30	5,00	25
			0,29	0,54	1,60	6,31	32
			0,26	0,43	1,24	4,82	40
			0,22	0,28	0,80	3,08	50
			0,23	0,30	0,85	3,11	64
			0,22	0,26	0,75	2,67	100

(1) 减速比($i=n_{an}/n_{ab}$)

(2) 转动惯量与传动轴和标准发动机轴直径D20有关。

(1) ratios($i=n_{an}/n_{ab}$)

(2) the moment of inertia relates to the input shaft and to standard motor shaft diameter D20



型号	size		PLFN 64	PLFN 90	PLFN 110	PLFN 140	Z ⁽²⁾
所有尺寸均以毫米为单位	all dimensions in mm						
D10 定位凸台	D10 centering	H7	20	31,5	40	50	
D11 安装孔分布圆	D11 hole circle diameter		31,5	50	63	80	
D12 定位凸台	D12 centering	h7	40	63	80	100	
D13 定位凸台	D13 centering		64	90	110	140	
D14 外径	D14 outside diameter		86	118	145	179	
D16 轴中心孔	D16 pinion bore		4,5 8x45°	5,5 8x45°	5,5 8x45°	6,6 12x30°	
D17 安装孔分布圆	D17 hole circle diameter		79	109	135	168	
D20 轴中心孔 ⁽¹⁾⁽⁴⁾	D20 pinion bore ⁽¹⁾⁽⁴⁾		11	14	19	24	1
			11	11	14	19	2
D21 中心孔 ⁽¹⁾	D21 center bore for motor ⁽¹⁾		60	80	95	130	1
			60	60	80	95	2
D22 安装孔分布圆 ⁽¹⁾	D22 hole circle diameter ⁽¹⁾		75	100	115	165	1
			75	75	100	115	2
D23 对角尺寸	D23 diagonal dimension		92	116	145	185	1
			92	92	116	145	2
Fw 倒角	Fw bevel angle	°	3	5	5	5	
G2 螺纹x深度	G2 thread x depth		M5x7 8x45°	M6x10 8x45°	M6x12 12x22,5°/45°	M8x15 12x30°	
G3 安装螺纹x深度 ⁽¹⁾	G3 mounting thread x depth ⁽¹⁾	4x	M5x10	M6x12	M8x16	M10x20	1
			M5x10	M5x10	M6x12	M8x16	2
L1 总长 ⁽³⁾	L1 overall length ⁽³⁾		71	89	108	157	1
			99,5	111	130	187,5	2
L5 倒角长度	L5 bevel length		6	11,5	10,5	17	
L8 法兰厚度	L8 flange thickness		4	7	8	10	
L10 定位凸台厚度	L10 length of centering		4	6	6	6	
L11 定位凸台厚度	L11 spigot depth	≥	3	6	6	6	
L12 定位凸台厚度	L12 spigot depth		10	12	12	14	
L13 输出法兰长度	L13 length of output flange		19,5	30	29	38	
L20 马达轴长度 ⁽³⁾	L20 motor shaft length ⁽³⁾		23	30	40	50	1
			23	23	30	40	2
L21 电机定位凸台深度	L21 motor location depth		3	3,5	3,5	4	1
			3	3	3,5	3,5	2
L22 输入法兰厚度 ⁽³⁾	L22 motor flange length ⁽³⁾		19	25,5	27,5	50,5	1
			19	19	25,5	27,5	2
Q3 法兰截面 ⁽¹⁾	Q3 flange section ⁽¹⁾	□	70	90	115	142	1
			70	70	90	115	2

⁽¹⁾ 这些参数与所配套的电机型号有关，详见第

⁽²⁾ 级数

⁽³⁾ 如果所配的电机轴 L20 比表中所给尺寸更长，那么L22和L1应根据所配电机轴长度适当加长

⁽⁴⁾ 于 j6; k6

⁽¹⁾ dimensions refer to the mounted motor-type, see OP 2

⁽²⁾ number of stages

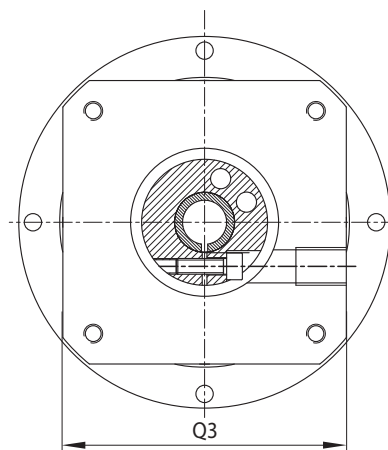
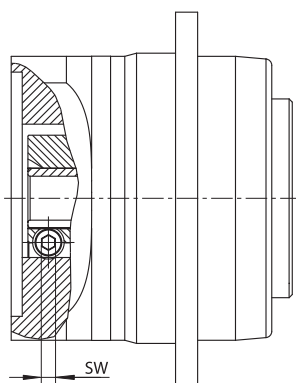
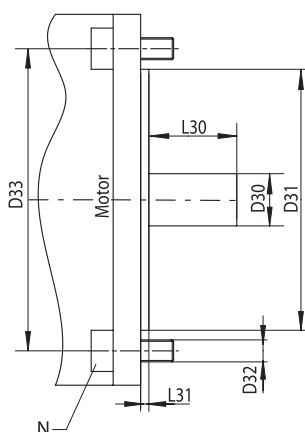
⁽³⁾ for longer motor shafts L20 applies: The measured motor flange length L22 and overall length L1 will be lengthened

⁽⁴⁾ for shaft fit j6; k6

OP 2: 可能的电机装配方式

OP 2: possible motor mounting

页 77 更多的选配方式
page other options



型号	size		PLFN 64		PLFN 90			PLFN 110			PLFN 140			Z ⁽²⁾
D30 电机轴直径 ⁽¹⁾⁽⁵⁾	D30 motor shaft diameter ⁽¹⁾⁽⁵⁾	mm	8/9,9,525/10/11/12/14/16/19		9,525/10/11/12/12,7/14/16/19/22/24			11/12,7/14/15,87/16/19/22/24/28/32/35			19/22/24/28/32/35/38/42/48		1	
			8/9,9,525/10/11/12/14/16/19		8/9,9,525/10/11/12/14/16/19			9,525/10/11/12/12,7/14/16/19/22/24			11/12,7/14/15,87/16/19/22/24/28/32/35		2	
D31 电机定位凸台 ⁽³⁾	D31 motor spigot ⁽³⁾		任意/any		任意/any			任意/any			任意/any			
D32 轴中心孔 ⁽³⁾	D32 pinion bore ⁽³⁾		任意/any		任意/any			任意/any			任意/any			
D33 安装孔分布圆 ⁽³⁾	D33 hole circle diameter ⁽³⁾		任意/any		任意/any			任意/any			任意/any			
L30 最短马达轴长度 ⁽¹⁾	L30 min. motor shaft length ⁽¹⁾	mm	16 (19 ⁽⁶⁾)		19 (21 ⁽⁷⁾)			21 (26 ⁽⁸⁾)			26(29 ⁽⁹⁾)		1	
			16 (19 ⁽⁶⁾)		16 (19 ⁽⁶⁾)			19 (21 ⁽⁷⁾)			21(26 ⁽⁸⁾)		2	
L31 定位凸台厚度	L31 spigot depth		任意/any		任意/any			任意/any			任意/any			
N 安装孔的数量	N numbers of mounting bores		4		4			4			5			
Q3 法兰截面 ⁽¹⁾	Q3 flange section ⁽¹⁾	□	70		90			115			142		1	
			70		70			90			115		2	
最大.电机重量 ⁽⁴⁾	max. motor weight ⁽⁴⁾	kg	10		15			34			50			
马达类型 ⁽¹⁾	motor type ⁽¹⁾		B5		B5			B5			B6			
紧固螺丝扭矩	torque clamping screw	Nm	4,5	9,5 ⁽⁶⁾	4,5	9,5	16,5 ⁽⁷⁾	9,5	16,5	40 ⁽⁸⁾	16,5	40 ⁽⁹⁾		
SW 内六角扳手型号	SW wrench width	mm	3	4 ⁽⁶⁾	3	4	5 ⁽⁷⁾	4	5	6 ⁽⁸⁾	5	6 ⁽⁹⁾		

(1) 其它尺寸请联系确认

(2) 级数

(3) 如果可能请给出法兰的相关参数

(4) 与电机装配的水平度和稳定性有关

(5) 与电机轴配合精度: j6; k6

(6) D30 > 14 mm

(7) D30 > 19 mm

(8) D30 > 24 mm

(9) D30 > 35mm

(1) other dimensions on inquiry

(2) number of stages

(3) if possible with the given flange dimensions

(4) referred to horizontal and stationary mounting

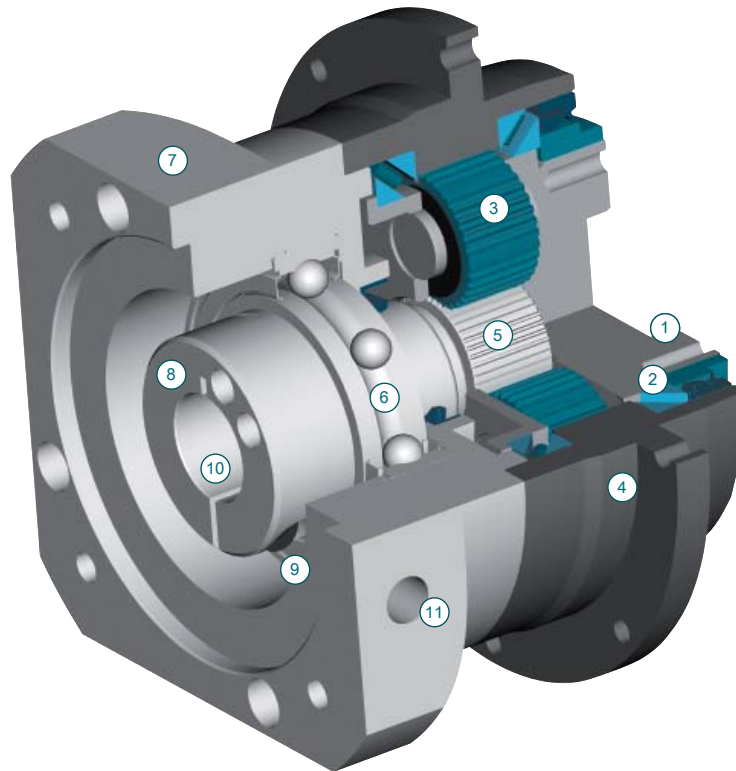
(5) shaft fit: j6; k6

(6) D30 > 14 mm

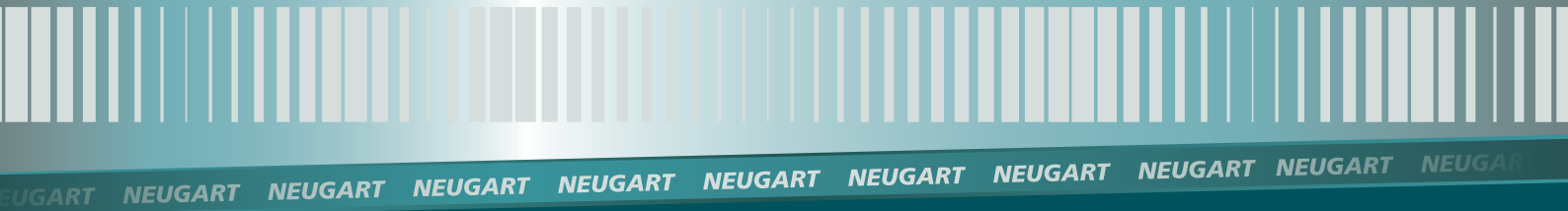
(7) D30 > 19 mm

(8) D30 > 24 mm

(9) D30 > 35mm



- | | |
|---|---|
| <p>1 输出轴
高张力不锈钢制，使抗扭性能达到最高</p> <p>2 输出轴轴承
大型高精度预紧圆锥滚子轴承，支座两侧均无间隙（双侧轴承固定）</p> <p>3 行星轮
高精度直齿行星轮，形状和凸度经过优化，表面经过硬化及珩磨处理</p> <p>4 齿轮
硬化齿廓，并在硬化后珩磨以提高承载能力，最小的磨损，阻止背隙的增加</p> <p>5 太阳轮
高精密机器制造，优化齿轮外形，硬化和珩磨处理提供高的承载能力，最小的磨损，阻止背隙的增加</p> <p>6 太阳轮轴承
高速球轴承的浮动设计可以消除输入端的热传导，然而还可以提供以太阳轮更容易的安装位置</p> <p>7 适配法兰
减速机输入端允许与任何伺服电机相连接，材质为铝合金导热性更好</p> <p>8 夹紧环
动平衡夹紧环允许更高的转速，钢质结构可以提供更高的传输扭矩</p> <p>9 夹紧螺钉
高强钢螺栓细牙螺纹可以提供更高的夹紧力</p> <p>10 PCS-2系统
PCS-2系统高精度夹紧系统-当前最值得信赖的先进系统</p> <p>11 安装螺孔
夹紧螺栓安装孔</p> | <p>1 output flange shaft
made of high-strength high quality steel for utmost torsional stiffness</p> <p>2 output shaft bearing
large high precision preloaded angular contact ball bearings for zero clearance on both sides of the carrier (straddle bearing support)</p> <p>3 planet gear
precision zero helix angle gear with optimized profile modifications and crowning; case hardened and hard finished by honing</p> <p>4 housing with integrated ring gear
ring gear case hardened and hard finished, honed for high load ability, minimum wear, consistent backlash</p> <p>5 sun gear
precision machined optimized gear profile, case hardened and honed for high load ability, low noise run, minimum wear and consistent backlash</p> <p>6 bearing for sun gear
high speed ball bearings in floating design eliminating thrust loads from thermal expansion, yet providing exact sun gear position for easy mounting</p> <p>7 motor adapter plate
allows to match up the gear head with virtually any servo motor, made of aluminum for enhanced thermal conductivity</p> <p>8 clamping ring
balanced ring suitable for high rpm, made of steel to allow high clamping forces for safe torque transfer</p> <p>9 clamping screw
high strength steel screw with special low pitch thread to generate a high clamping force</p> <p>10 PCS-2 System
Precision Clamping System - most reliable advanced system available today</p> <p>11 assembly bore
access bore for the clamping screw</p> |
|---|---|



纽卡特行星减速机（沈阳）有限公司
电话：024 - 25378129
传真：024 - 25372552
网址：www.neugart.net.cn
邮箱：neugart@vip.163.com

